

BioBag® Application Guide

Storage

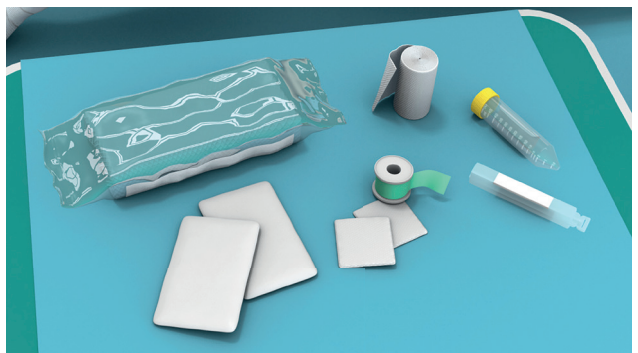
- Keep in transport containers until use
- **Do not freeze**
- Do not store above 25°C
- Apply before the expiry date
- For optimal results apply on the day of delivery

Viability

- Check viability before use
- Some movement should be visible
- Larvae might appear slow or sluggish
- Viable larvae should be a cream to beige colour
- Report viability concerns within 24 hours of receipt
- Provide BioMonde a photo/video before discarding

Preparation

- Dressing kit or similar
- Saline
- Gauze
- Waterproof skin barrier i.e. zinc paste
- Non-occlusive wound pad(s)
- Non-occlusive bandage, tape, or compression
- BioBag®(s)



OUR CLINICAL SUPPORT TEAM ARE HERE FOR YOU

Call our 24/7 **Clinical Helpline** on **0345 230 6806**

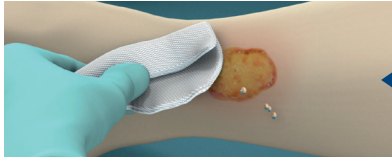
E-mail: clinicalsupport@biomonde.com

Order: 0345 230 1810



Step-by-step BioBag[®] Application

1
CLEANSE



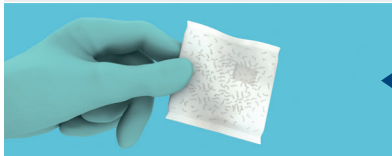
Physically wipe the wound with water, saline or wound cleanser to remove previous dressing residue.

2
PROTECT

Apply a thin layer of a protective skin barrier cream/paste to the peri-wound while avoiding contact with the wound margins.



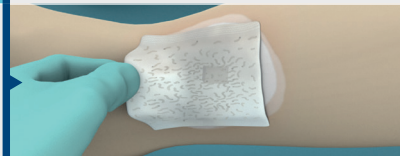
3
CHECK



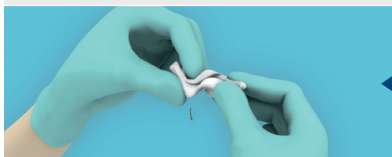
Check that the larvae are viable. Report concerns to 0345 230 1810 within 24 hours. Take a photo/video before discarding.

4
APPLY

Place the BioBag[®] centrally on the wound, overlapping the margins, with physical contact with the area to be treated.



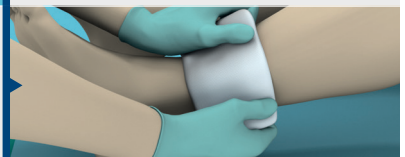
5
MOISTEN



Immerse one or two squares of dry gauze in saline and wring out so that the gauze is moist: not dry or dripping wet.

6
COVER

Place the moist gauze and a non-occlusive breathable wound pad on top of the BioBag[®]. No foams, films, or super-absorbents.



7
DRESS



Secure the BioBag[®], moist gauze and wound pad in place with non-occlusive tape, bandage, or compression dressing.

OUR CLINICAL SUPPORT TEAM ARE HERE FOR YOU

Call our 24/7 **Clinical Helpline** on **0345 230 6806**

E-mail: clinicalsupport@biomonde.com

Order: 0345 230 1810