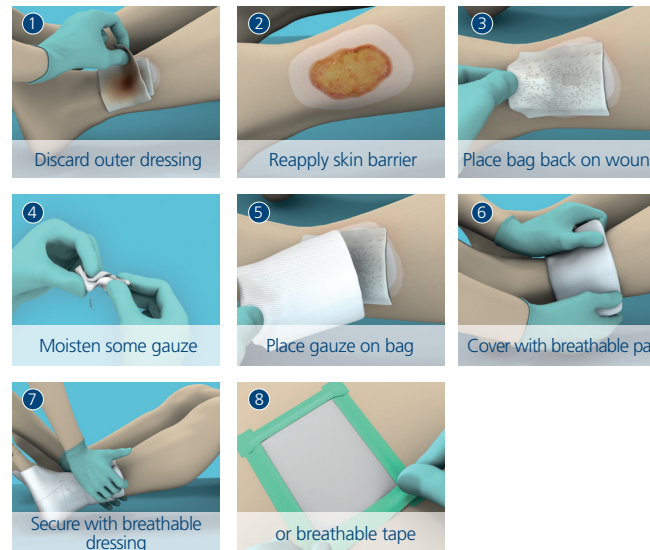


Looking after your Larval Therapy

Application



Care



Day 3 assessment



2-3 applications are usually required for complete debridement.

Non-progression of the wound indicates further debridement is required.

Wound progression & proliferation indicates completion of debridement.

Disposal

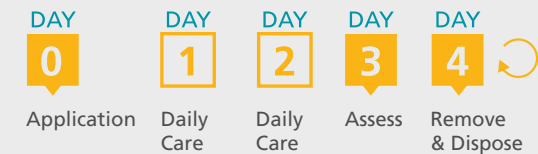


Double-bag and discard with dressings waste.

Prescribing

In the UK Larval Therapy is an unlicensed medicinal product. An unlicensed medicinal product should not be supplied where an equivalent licensed medicinal product can meet the special needs of the patient. BioMonde's Larval Therapy products must be procured by a doctor, supplementary prescriber or nurse independent prescriber and is available on FP10 prescription.

Treatment cycle



Storage

- Keep in transport containers until use
- **Do not freeze**
- Do not store above 25°C
- Apply before the expiry date
- For optimal results apply on the day of delivery

Viability

- Check viability before use
- Larvae should be a cream to beige colour
- Some movement should be visible
- Larvae might appear slow or sluggish
- Call **0345 230 1810** with viability concerns within 24 of receipt
- Take photos or video of viability concerns before applying or discarding

HOW TO ORDER

Telephone: 0345 230 1810
 E-mail: orders@biomonde.com
 Fax: 01656 668 047

ORDER BEFORE 2PM FOR NEXT DAY DELIVERY

OUR CLINICAL SUPPORT TEAM ARE HERE FOR YOU

Support: clinicalsupport@biomonde.com
 For 24/7 support call our **Clinical Helpline on 0345 230 6806**